

Summary Page

Utilisation Analysis for a PHO Example PHO

For 01 Oct 2012 to 31 Dec 2012

Utilisation

GP Visits	7482
Other Visits	8114
Total	15596

Utilisation Rate

(average visits per patient)	
GP Utilisation Rate	0.55
Other Utilisation Rate	0.60
Total	1.15

Patients

Funded Patients	13591
-----------------	-------

Utilisation Rate by Age Group

00-04	1.14
05-14	0.60
15-24	0.66
25-44	1.05
45-64	1.58
65+	2.51

Go to:

[GP and Nurse Quarterly Utilisation](#)

[GP and Nurse Utilisation by Practice](#)

[GP High Need Analysis - Performance Management](#)

[Nurse High Need Analysis - Performance Management](#)

[Total Utilisation by Age Group](#)

[Total Utilisation by Quintile and Age Group](#)

[Total Utilisation by Ethnic Group and Age Group](#)

Further information about this spreadsheet can be found on Karo's Website:
[Karo PHO Utilisation Analysis Spreadsheet](#)

Utilisation

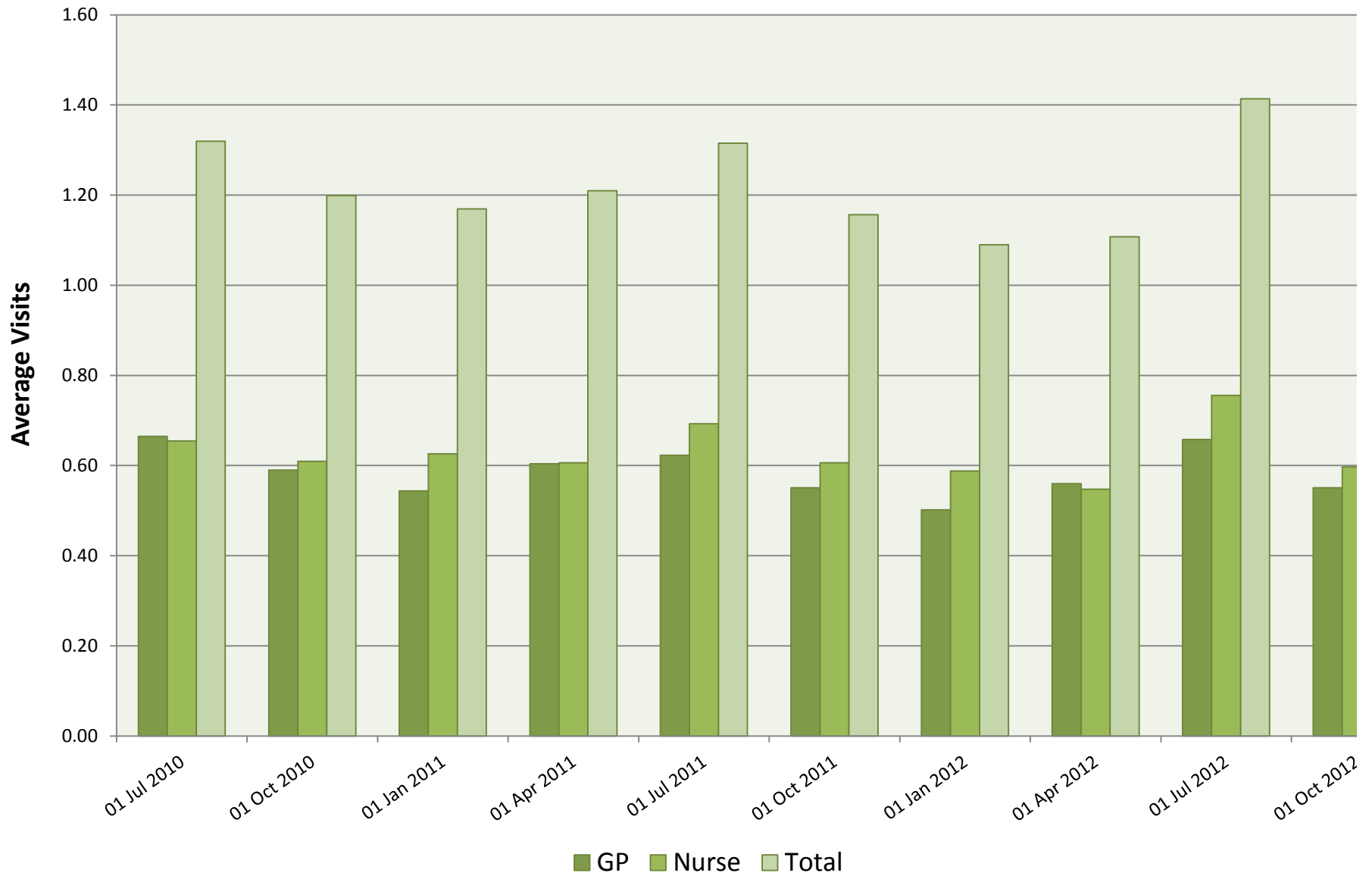
Summary GP and Nurse Utilisation for Example PHO for the Oct 12 Qtr

[Home](#)

Quarter Start Date	Patients	GP		Nurse/Other		Total	
	Total	Visits	Utilisation Rate	Visits	Utilisation Rate	Visits	Utilisation Rate
01 Jul 2010	11875	7895	0.66	7775	0.65	15670	1.32
01 Oct 2010	11936	7041	0.59	7273	0.61	14314	1.20
01 Jan 2011	12104	6580	0.54	7578	0.63	14158	1.17
01 Apr 2011	13508	8156	0.60	8189	0.61	16345	1.21
01 Jul 2011	13535	8429	0.62	9376	0.69	17805	1.32
01 Oct 2011	13528	7448	0.55	8200	0.61	15648	1.16
01 Jan 2012	13497	6773	0.50	7934	0.59	14707	1.09
01 Apr 2012	13486	7552	0.56	7383	0.55	14935	1.11
01 Jul 2012	13436	8835	0.66	10156	0.76	18991	1.41
01 Oct 2012	13591	7482	0.55	8114	0.60	15596	1.15

Utilisation Graph

Average Visits per Patient by Quarter for Example PHO



Practice

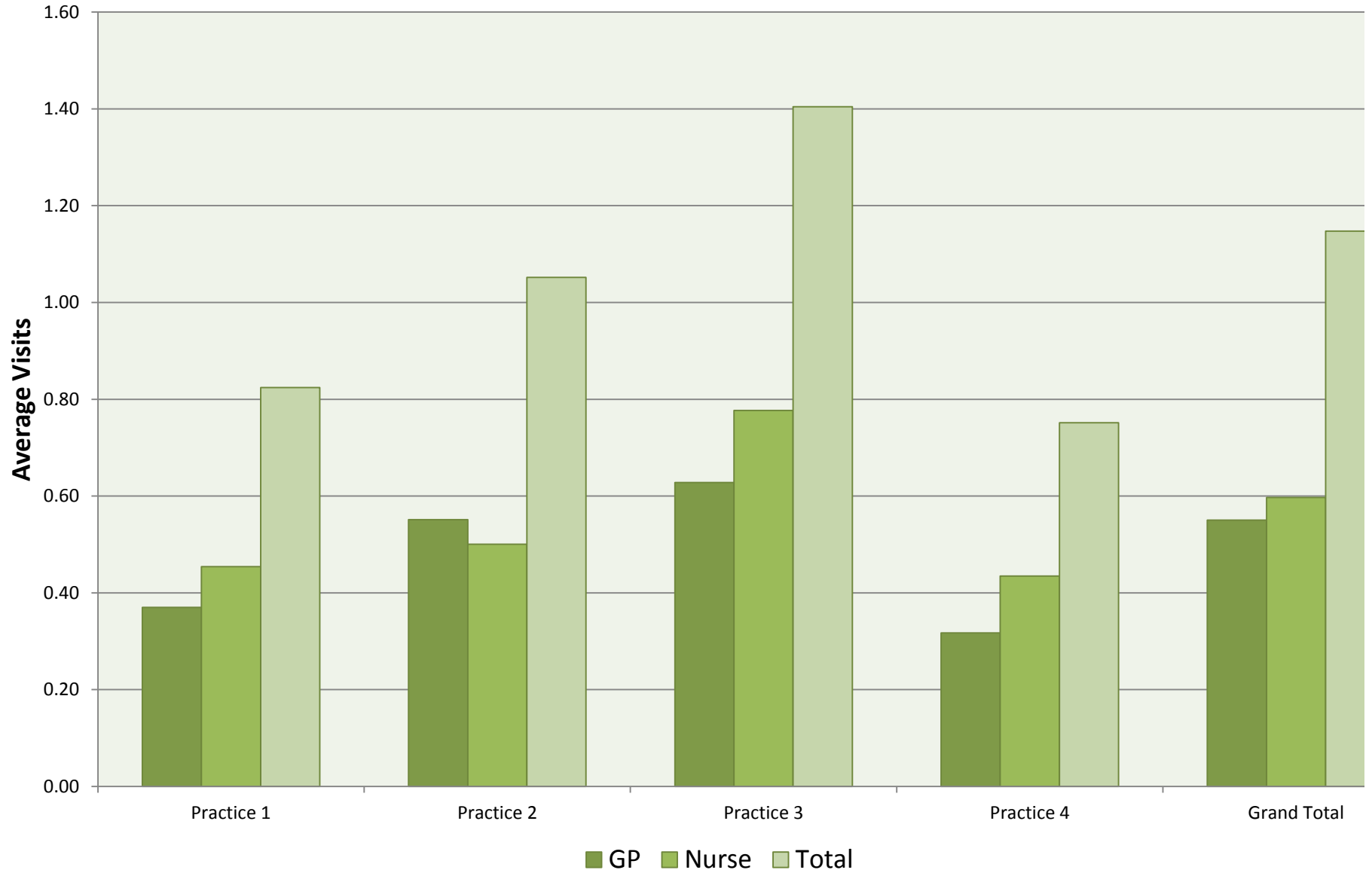
Practice Breakdown GP and Nurse for Example PHO for the Oct 12 Qtr

[Home](#)

Practice	Patients	GP		Nurse/Other		Total	
	Total	Visits	Utilisation Rate	Visits	Utilisation Rate	Visits	Utilisation Rate
Practice 1	489	181	0.37	222	0.45	403	0.82
Practice 2	6611	3644	0.55	3310	0.50	6954	1.05
Practice 3	5147	3231	0.63	3998	0.78	7229	1.40
Practice 4	1344	426	0.32	584	0.43	1010	0.75
Grand Total	13591	7482	0.55	8114	0.60	15596	1.15

Practice Graph

Average Visits per Patient per Practice for Example for the Oct 12 Qtr



High Need - GP

Performance Management GP High Needs Analysis for Example PHO for the Oct 12 Qtr

[Home](#)

Agegroup	High Need			Non-High Need		
	Patients	GP Visits	Rate	Patients	GP Visits	Rate
00-04	939	495	0.527	206	91	0.442
05-14	1598	425	0.266	358	103	0.288
15-24	1870	512	0.274	727	260	0.358
25-44	2699	1326	0.491	1185	524	0.442
45-64	1994	1728	0.867	943	657	0.697
65+	642	902	1.405	430	459	1.067
	9742			3849		

Agegroup	NZ Population	High Need	Non High Need	NZPop weights
00-04	276900	145970	122320	0.0685
05-14	602240	160170	173270	0.1490
15-24	586340	160538	209695	0.1450
25-44	1156270	568067	511296	0.2860
45-64	935810	810973	651991	0.2315
65+	485540	682176	518286	0.1201
Total	4043100	2527894	2186857	1

Standardised Utilisation Rate High Need: 0.625
 Non High Need: 0.541
 Ratio **1.156**

NB: This rate may not be exactly the same as the one from DHB NZ - that is because they are standardising to the DHB population while we are using NZ population
 However this should be close to what your ratio will be.

High Need - Nurse

Performance Management Nurse High Needs Analysis for Example PHO for the Oct 12 Qtr

[Home](#)

Agegroup	High Need			Non-High Need		
	Patients	Nurse Visits	Rate	Patients	Nurse Visits	Rate
00-04	939	637	0.678	206	82	0.398
05-14	1598	531	0.332	358	109	0.304
15-24	1870	652	0.349	727	299	0.411
25-44	2699	1669	0.618	1185	559	0.472
45-64	1994	1771	0.888	943	476	0.505
65+	642	1042	1.623	430	287	0.667
	9742			3849		

Agegroup	NZ Population	High Need	Non High Need	NZPop weights
00-04	276900	187844	110222	0.0685
05-14	602240	200119	183364	0.1490
15-24	586340	204435	241149	0.1450
25-44	1156270	715011	545447	0.2860
45-64	935810	831153	472371	0.2315
65+	485540	788057	324070	0.1201
Total	4043100	2926619	1876623	1

Standardised Utilisation Rate High Need: 0.724
 Non High Need: 0.464
 Ratio **1.560**

NB: This rate may not be exactly the same as the one from DHB NZ - that is because they are standardising to the DHB population while we are using NZ population However this should be close to what your ratio will be.

Age Group

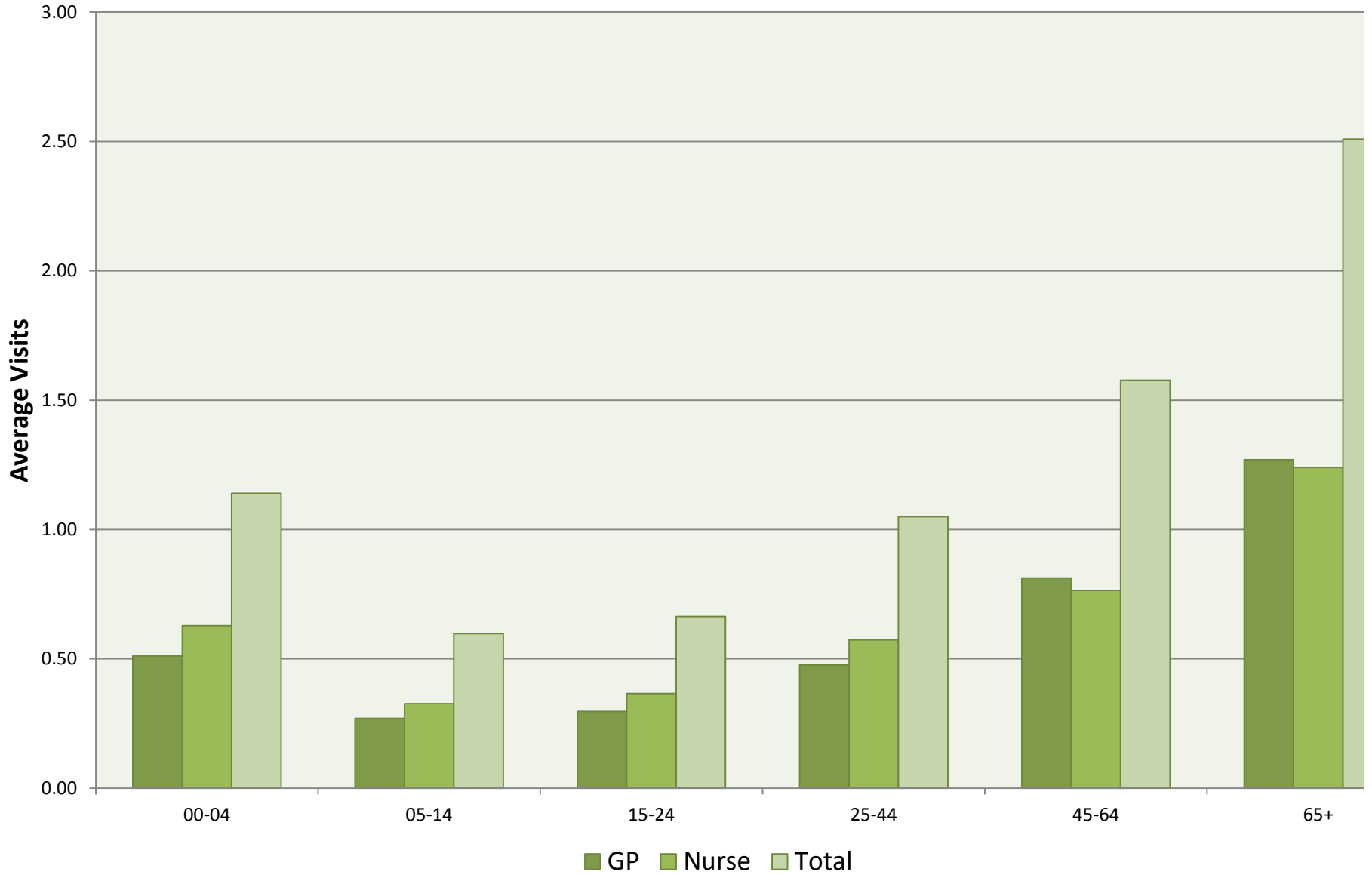
GP and Nurse Utilisation by Age Group for Example PHO for the Oct 12 Qtr

[Home](#)

Age Grp	Patients	GP		Nurse/Other		Total	
	Total	Visits	Utilisation Rate	Visits	Utilisation Rate	Visits	Utilisation Rate
00-04	1145	586	0.51	719	0.63	1305	1.14
05-14	1956	528	0.27	640	0.33	1168	0.60
15-24	2597	772	0.30	951	0.37	1723	0.66
25-44	3884	1850	0.48	2228	0.57	4078	1.05
45-64	2937	2385	0.81	2247	0.77	4632	1.58
65+	1072	1361	1.27	1329	1.24	2690	2.51
Grand Total	13591	7482	0.55	8114	0.60	15596	1.15

Age Group Graph

Average Visits per Patient by Age Group for Example PHO for the Oct 12 Qtr



Quintile

Total Utilisation by Quintile and Age Group for Example PHO for the Oct 12 Qtr

[Home](#)

Patients

Quintile	00-04	05-14	15-24	25-44	45-64	65+
Q1	52	114	172	256	196	70
Q2	77	165	224	350	302	120
Q3	115	184	382	545	366	162
Q4	178	303	498	755	550	213
Q5	715	1180	1296	1934	1478	501

Visits

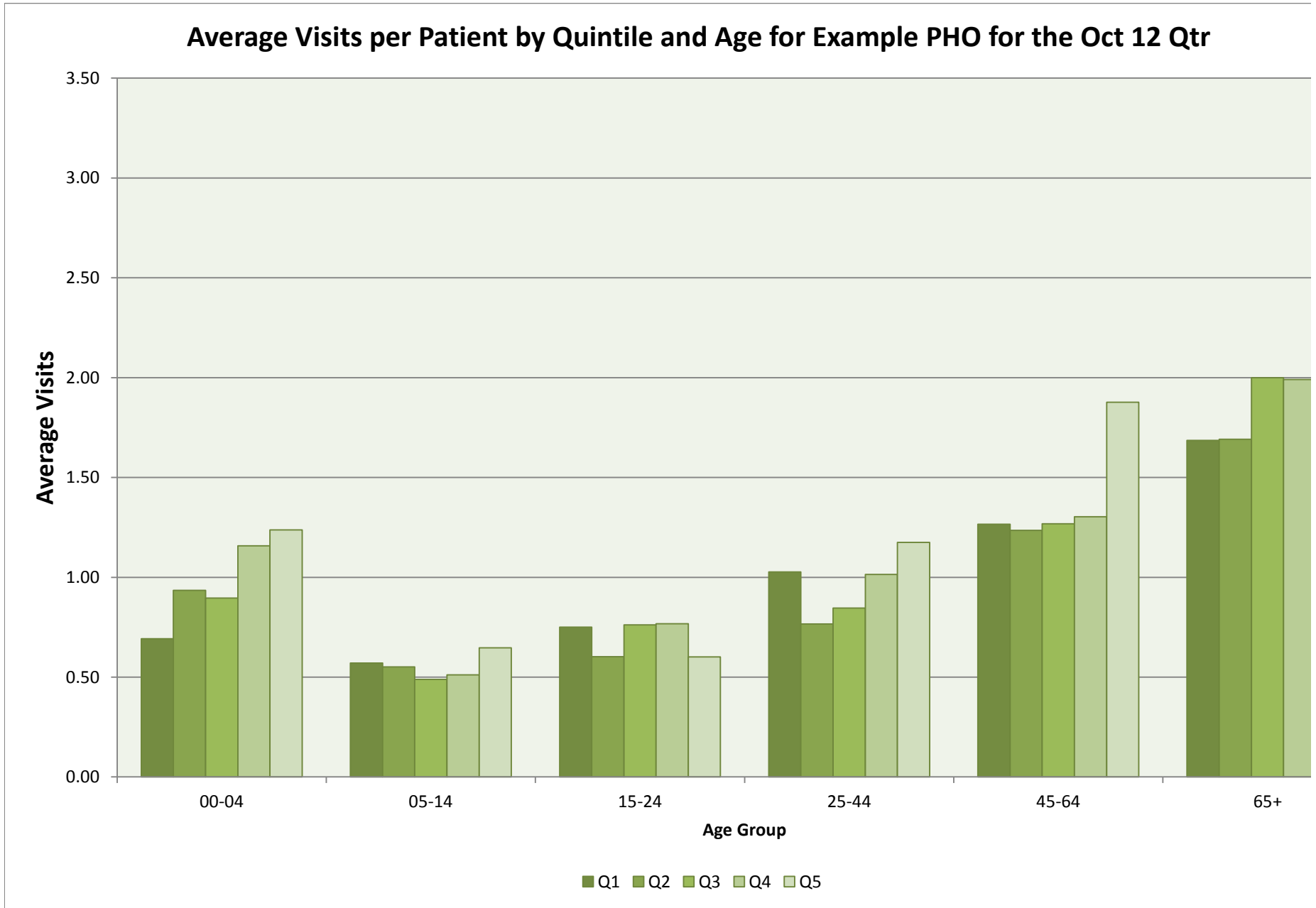
Quintile	00-04	05-14	15-24	25-44	45-64	65+
Q1	36	65	129	263	248	118
Q2	72	91	135	268	373	203
Q3	103	90	291	461	464	324
Q4	206	155	382	766	717	424
Q5	885	763	780	2272	2774	1610

Utilisation

Quintile	00-04	05-14	15-24	25-44	45-64	65+
Q1	0.69	0.57	0.75	1.03	1.27	1.69
Q2	0.94	0.55	0.60	0.77	1.24	1.69
Q3	0.90	0.49	0.76	0.85	1.27	2.00
Q4	1.16	0.51	0.77	1.01	1.30	1.99
Q5	1.24	0.65	0.60	1.17	1.88	3.21

Quintile Graph

Average Visits per Patient by Quintile and Age for Example PHO for the Oct 12 Qtr



Ethnic Group

Total Utilisation by Ethnic Group and Age Group for Example PHO for the Oct 12 Qtr

[Home](#)

Patients

EthnicGroup	00-04	05-14	15-24	25-44	45-64	65+
Maori	278	420	583	730	514	107
Pacific Island	431	844	882	1178	858	289
European	81	136	514	787	845	419
Asian	170	261	254	586	383	161
Other	185	292	362	590	332	96

Visits

EthnicGroup	00-04	05-14	15-24	25-44	45-64	65+
Maori	319	226	421	748	840	415
Pacific Island	549	496	452	1318	1534	954
European	54	93	399	691	1191	885
Asian	174	163	142	481	485	257
Other	209	182	309	808	577	179

Utilisation

EthnicGroup	00-04	05-14	15-24	25-44	45-64	65+
Maori	1.15	0.54	0.72	1.02	1.63	3.88
Pacific Island	1.27	0.59	0.51	1.12	1.79	3.30
European	0.67	0.68	0.78	0.88	1.41	2.11
Asian	1.02	0.62	0.56	0.82	1.27	1.60
Other	1.13	0.62	0.85	1.37	1.74	1.86

Ethnic Group Graph

Average Visits per Patient by Ethnic Group and Age for Example PHO for the Oct 12 Qtr

